

# guardian fibre cement



## Cladding Plank

CSR™ Fibre Cement Cladding Plank provides an attractive external cladding system for homes. It is ideal for use as a complete cladding system, or for second storey additions and gable ends.

CSR™ Fibre Cement Cladding Plank is available in two distinctive surface textures.

- Smooth – a traditional smooth finish providing a smart ship-lapped appearance.
- Woodgrain – a realistic wood grain texture for that natural look.

### Installation Literature

- CSR™ Fibre Cement Cladding Plank and Weatherboard Systems.

PRODUCT RANGE				
Face Texture	Thickness (mm)	Width (mm)	Length (mm)	Weight (kg/1m)
Smooth	7.5	230	4200	2.9
Smooth	7.5	300	4200	3.8
Woodgrain	7.5	230	4200	2.9
Woodgrain	7.5	300	4200	3.8

Refer to the Coverage Calculator below for simple instructions on determining how many boards you will need



## Wallboard. Recessed Edge

CSR™ Fibre Cement Wallboard is ideal for lining wet areas such as bathrooms, laundries and for construction of impact resistant walls.

CSR™ Fibre Cement Wallboard is immune to permanent water damage, will not rot, is simple to install, has a smooth flat sanded surface, and is suitable for all forms of decorative finishing.

### Installation Literature

- CSR™ Fibre Cement Wet Area Systems
- CSR™ Fibre Cement Ceiling Systems
- CSR™ Fibre Cement Fire and Acoustic Wall Systems

Length (mm)	Width (mm)		
	900	1200	1350
1800		✓	
2400	✓	✓★	✓
2700		✓★	
3000	✓	✓★#	✓
3600		✓	✓
4200		✓	✓

Sheet Availability Thickness:  
 (✓ = 6mm) (★ = 9mm) (# = 12mm)  
 Mass: (6mm = 9.5kg/m<sup>2</sup>) (9mm = 13.5kg/m<sup>2</sup>)  
 (12mm = 18.3kg/m<sup>2</sup>)



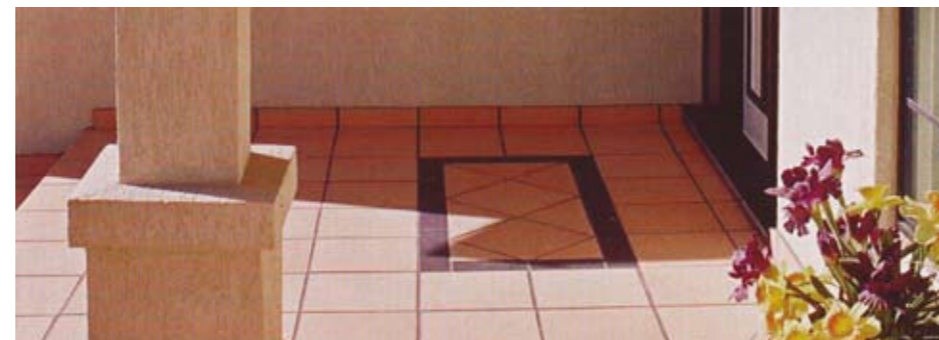
## Lattice

CSR™ Fibre Cement Lattice is ideal for feature panels, screens and gable ends. CSR™ Fibre Cement Lattice can be quickly and easily painted with a roller.

### Installation Literature

- CSR™ Fibre Cement Lattice.

PRODUCT RANGE				
Lattice Pattern	Thickness	Width (mm)	Length (mm)	Mass kg/m <sup>2</sup>
Square	6	1200	1800	7
Square	6	1200	2400	7
Diamond	6	1200	1800	7
Diamond	6	1200	2400	7



## Compressed Sheet

CSR™ Fibre Cement Compressed Sheet is ideal for wet area flooring, decks and toilet partitioning. It forms a high strength, impervious flooring/panel which is ideal for ceramic tiling. CSR™ Fibre Cement Compressed Sheet is also a popular choice for facade applications as it provides a fast and economical lightweight cladding solution, and accepts a wide range of decorative finishes.

### Installation Literature

- CSR™ Fibre Cement Compressed Sheet Decking Systems.
- CSR™ Fibre Cement ExpressWall™ Facade System.

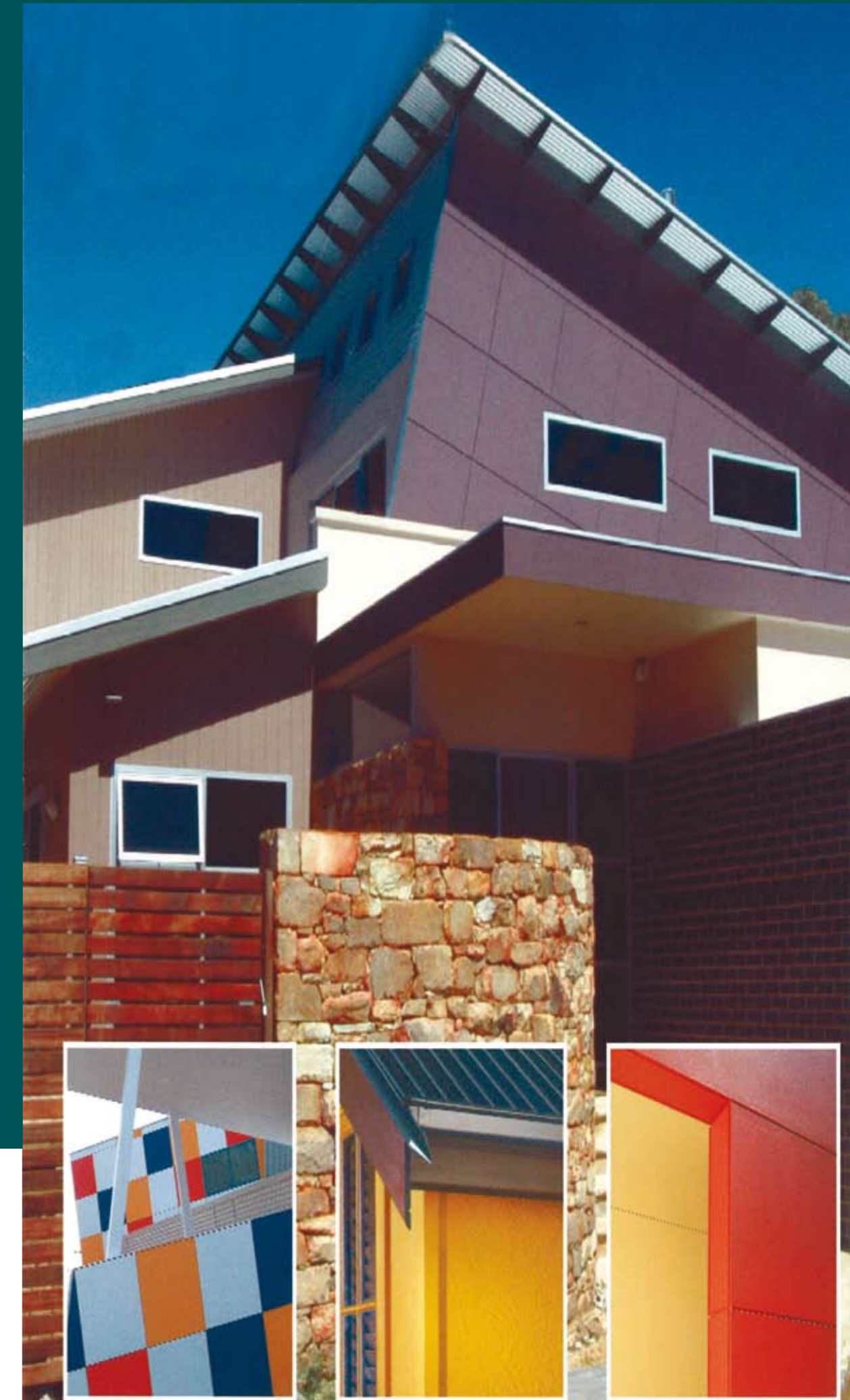
Thickness (mm)	Width (mm)	Length (mm)					
		1500	1800	2100	2400	2700	3000
6	1200				✓		✓
9	900		✓		✓	✓	✓
	1200		✓	✓	✓	✓	✓
12	1200				✓		✓
15	900	✓	✓	✓	✓	✓	✓
	1200	✓	✓	✓	✓	✓	✓
18	900		✓		✓		✓
	1200		✓	✓	✓		✓
24	1200				✓		

Mass: (4.5mm/8.7kg/m<sup>2</sup>) (6mm/11.4kg/m<sup>2</sup>) (12mm/22.5kg/m<sup>2</sup>)  
 (15mm/28.5kg/m<sup>2</sup>) (18mm/34.5kg/m<sup>2</sup>) (24mm/47kg/m<sup>2</sup>)

# guardian fibre cement



sales@guardianbuilding.com.au  
 www.guardianbuilding.com.au  
 TOLL FREE 1800 249 603





PRODUCT RANGE		
Length (mm)	Length (mm)	
	900	1200
2440	✓	✓
2725	✓	✓
3000	✓	✓

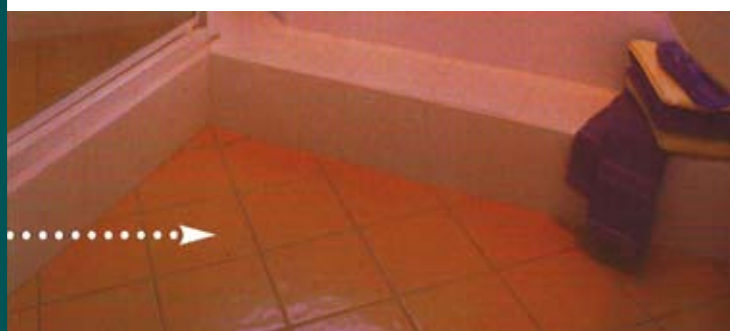
Mass: 7.5mm = 12.2kg/m<sup>2</sup>

### texture base sheet

CSR™ Fibre Cement Texture Base Sheet Provides a solid substrate for applied texture finishes. CSR™ Fibre Cement Texture Base Sheet is suitable for use as a wall cladding for new homes, extensions, upper storey additions and light commercial applications.

#### Installation Literature

- CSR™ Fibre Cement Texture Base Sheet for Applied Finish Systems



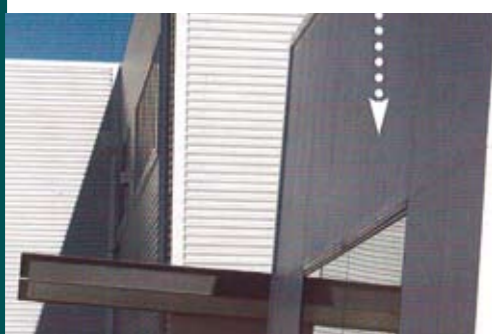
PRODUCT RANGE			
Thickness (mm)	Width (mm)	Length (mm)	Mass (kg/m <sup>2</sup> )
6	900	1800	9.5

### ceramic tile underlay

CSR™ Fibre Cement Ceramic Tile Underlay is an easily installed and cost effective way to form a flat substrate for laying ceramic tiles over existing floors.

#### Installation Literature

- CSR™ Fibre Cement Underlay Systems



PRODUCT RANGE			
Length (mm)	Thickness (mm)	Width (mm)	
		900	1200
1800	9	✓	✓
2100	9	✓	✓
2400	9	✓	✓
2700	9	✓	✓
3000	9	✓	✓

Mass: 9mm = 17kg/m<sup>2</sup>

### ExpressWall™

CSR™ ExpressWall™ system provides a fast and economical facade solution for commercial, industrial and residential building types.

CSR™ ExpressPanel™ is a compressed fibre cement sheet used in the CSR™ ExpressWall™ Facade System. CSR™ ExpressPanel™ has a smooth flat surface, is factory sealed on all six side and accepts a wide range of decorative finishes.

#### Installation Literature

- CSR™ Fibre Cement ExpressWall™ Facade System



### Rendaline™

CSR™ RendaLine™ is a complete external wall cladding system providing a cost effective and attractive alternative to brick veneer and rendered masonry construction, re-cladding, extensions and upper storey additions, and light commercial applications.

#### Installation Literature

- CSR™ RendaLine™ Installation Manual

PRODUCT RANGE					
Length (mm)	Thickness (mm)	Width (mm)	Length (mm)	Sheets per pack	Pack Weight tonnes
10232	8	1200	2440	30	1.03
10233	8	1200	2725	30	1.15
10234	8	1200	3000	30	1.26



### Woodgrain Panel

CSR™ Fibre Cement Woodgrain Panel is a decorative interior lining sheet with a timber board and batten pattern. It is ideal for lining garages, workshops, rumpus rooms, and as a dado panel.

#### Installation Literature

- CSR™ Fibre Cement Woodgrain Panel Data Sheet.

PRODUCT RANGE			
Thickness (mm)	Width (mm)	Length (mm)	Mass kg/m <sup>2</sup>
6	1175	2540	10
6	1175	2700	10



### Stucco Panel

CSR™ Fibre Cement Stucco Panel provides a traditional stucco texture and is suitable for use as an external cladding or as an infill panel on gable ends.

PRODUCT RANGE			
Thickness (mm)	Width (mm)	Length (mm)	Mass kg/m <sup>2</sup>
6	1198	2440	10
6	1198	3000	10



### Wallboard. Square Edge

CSR™ Fibre Cement Wallboard Square Edge is ideal for internal lining, soffits and exposed rafter ceilings.

#### Installation Literature

- CSR™ Fibre Cement Wet Area Systems
- CSR™ Fibre Cement Ceiling Systems
- CSR™ Fibre Cement Fire and Acoustic Wall Systems Design Guide.

PRODUCT RANGE	
Length (mm)	Square Edge 6mm thickness (*6mm Bevel Edge)
	Width (mm)
2400	1200 ✓
2700	1200 ✓
3000	1200 ✓
3600	1200 ✓

Mass:  
(4.5mm = 7.4kg/m<sup>2</sup>)  
(6mm = 9.5kg/m<sup>2</sup>)  
\*Queensland Only



### Cladding and Eaves Lining Sheet

CSR™ Fibre Cement Cladding Sheet is a multipurpose board for external cladding, soffit lining, gable ends and composite construction.

CSR™ Fibre Cement Eaves Lining Sheet is available in three sheet widths to suit most popular eaves designs.

#### Installation Literature

- CSR™ Fibre Cement External Cladding and Eaves Lining System

Length (mm)	PRODUCT RANGE							
	Eaves Lining Sheet 4.5mm thickness			Cladding Sheet				
	Width (mm)			4.5mm thick		6mm thick		
	450	600	750	900	1200	900	1200	
1800				✓	✓		✓	
2100					✓			
2400	✓	✓	✓	✓	✓	✓	✓	
2700				✓	✓		✓	
3000				✓	✓		✓	